

Opening and closing window

Open window by turning handle to vertical position. The sash should be able to remain open in three positions. If not, see page 3.



Ventilation position

The handle allows the sash to be secured in a ventilation position.



Use of the ventilation flap

To enjoy fresh air even when the window is fully closed, pull the control bar lightly downwards to open the ventilation flap. The window will remain locked, but air can enter the room through a built-in air filter that keeps out dust, insects and driving snow.



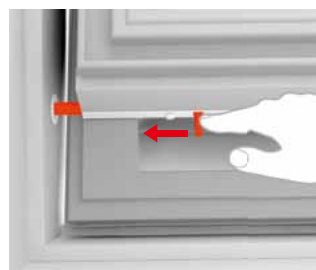
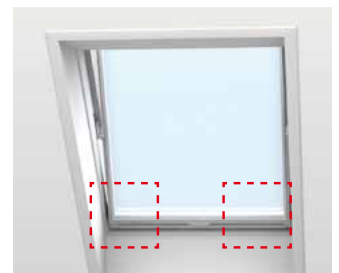
Cleaning the pane

Turn the handle to vertical position. Pull the control bar downwards and rotate the sash 180 degrees. The sash must be secured in position by sliding the two barrel bolts into the bushings at the bottom of the side frames. This safety feature leaves both hands free for cleaning.

Clean the pane with a soft, clean, lint-free cloth/chamois leather/non-abrasive sponge or a clean, non-metal window squeegee. Clean water will normally be sufficient for cleaning the pane. Ordinary, non-abrasive household cleaners can also be used. Soft water is best for cleaning panes. Therefore, in hard-water areas add a small amount of detergent to soften the water or wipe off all excess water after cleaning.

Warning

- Avoid contact from silicone with the pane.
- Do not use any cleaning products containing abrasive particles.
- Do not use chemical products for cleaning the pane.
- Avoid contact with the pane from all sharp or abrasive objects including jewellery.
- Never attempt to clean off dirt on the pane without first applying water.
- If any works are taking place in the vicinity of the pane, protect the pane with a clean plastic sheet to prevent any splashes or staining from aggressive and abrasive compounds.



Minimising condensation

Particularly in rooms with high levels of humidity, condensation can form on the inner pane of the window. This can be minimised by fitting a radiator directly below the window and by airing the room frequently.



Cleaning the air filter

The air filter can be removed and washed with ordinary household cleaners. Fully rotate and secure the window in cleaning position, then remove the filter from the filter rail. (New filters are available from your VELUX sales company).



Cleaning the window

The white polyurethane surface can be cleaned with ordinary household cleaners.



Cleaning the flashing

Leaves and other debris should be removed from the flashing around the window to allow rainwater to flow freely.



Snow and ice

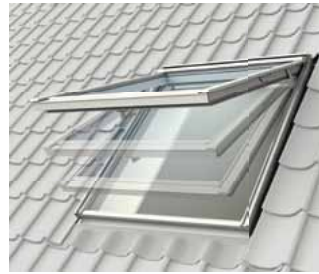
It is important to make sure that water can always drain off from the window and surrounding gutters.

Snow and ice should therefore be removed from the area on and around the window in the same way as leaves and other debris should be removed from flashing and gutters to allow melt water to flow freely.



Opening and closing window

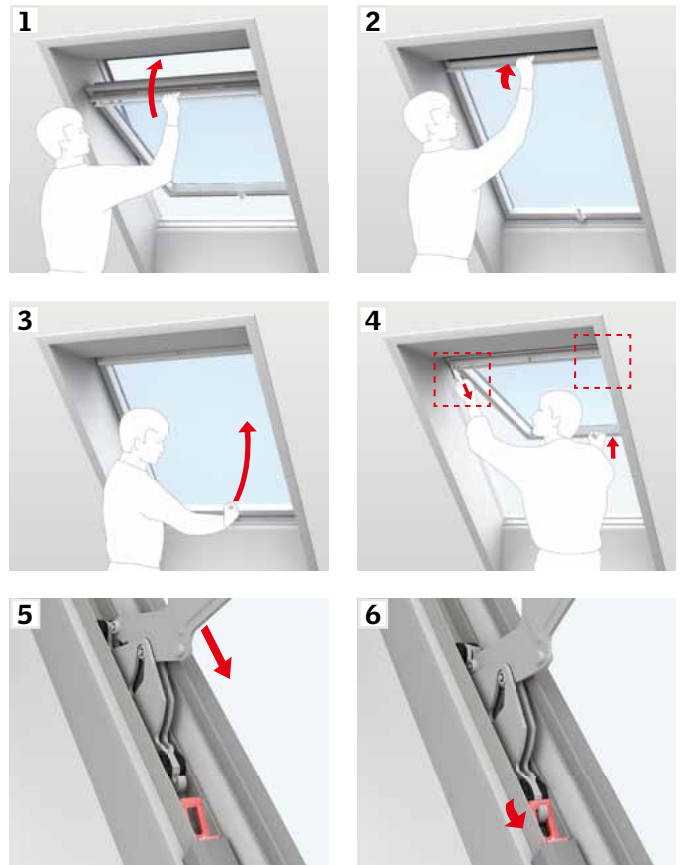
Open window by turning handle to vertical position. The sash should be able to remain open in three positions. If not, check that fittings and springs connect on both sides (see section **A**). If the sash still cannot remain open in three positions, adjust springs (see section **B**).



A

Connecting springs to fittings

Close window using control bar (1, 2). Then open window using handle in bottom sash (3). Push sash upwards, while pulling fittings downwards to connect with springs on both sides (4, 5, 6).



B

Adjusting springs (only if the sash cannot remain open in three positions)

Remove spring covers temporarily (1). Turn nuts on springs equally in both sides (2).

Turn clockwise (3) to increase lifting capacity (for low roof pitches).

Turn anti clockwise (4) to decrease lifting capacity (for high roof pitches).

Special springs are available from your VELUX sales company for roof pitches from 55° to max 75°.

Test that the sash can remain open in three positions.

